

# Bridge

## Area Committee Executive Summary

Unofficial December 2012 Data

# INTRODUCTION

The Bridge Ward is situated on the south side of the city and covers the area of Meadows and part of the City Centre including London Road, Canal Street, The Broadmarsh, Market Square, Hockley and goes as far as Parliament Street.

The total population of the Bridge Ward is 14,669 (Census 2011), total population for Bridge Ward in 2001 was 9,084; this shows an increase by population of 61.5%.

Total households in the Bridge Ward 7,111 (People living in the same household that share kitchen / bathroom – Census 2011). Additional Census 2011 data will be available after January 2013.

**Population by Ethnic Group** - 72% (6518) being White British, the largest minority group is Pakistani with 6.9% (627), followed by Black Caribbean 5.9% (537), Indian 2.9% (262) – (Census 2001)

**Population by Religion** – 52.1% (4734) Christians -, 8.6% (786) Muslim, 1.6% (141) Sikh, 1.1% (101) Hindu, 27.0% (2456) no Religion – (Census 2001)

The Bridge Ward has a mixed population and communities get on well with each another. Recently the area has seen an increase of new and emerging communities mainly from Eastern European countries as well as from Africa.

There are a number of residential areas across the ward including Cliff Road, Private estate off Castle Marina, Turnyes Quays, flats in the city centre and the Embankment. The largest community residential area is in the Meadows.

There are two distinct areas within the Meadows, The Old Meadows and The New Meadows. Old Meadows has the traditional open street layout with terraced housing in the main, where as the New Meadows was built

with the Radbourne layout where a frontage of a property will face the rear of another property. This area also has walkways that run under and to the side of properties with many cut through ways and options.

The Meadows has three primary schools which include Greenfields, Riverside and Welbeck. With the steady increase in the number of children of primary school age, Nottingham City Council has consulted with parents/carers, staff, governors and the wider community about the possibility of expanding Riverside Primary School from a 210 place primary school to a 420 place school. The consultation process lasted for six weeks and took place from 5<sup>th</sup> November to 16<sup>th</sup> December 2012. If this proposal is approved, building works will take place to expand the current building to accommodate the increase in numbers. It is estimated that the building works will be completed for the autumn term 2014.

The Meadows has two Police Beat Areas which are covered by the Neighbourhood Policing Teams and they are The Meadows and Riverside. The Riverside Beat covers the New Meadows and the industrial estate off Queens Drive and Castle Marina.

The area is home to some of the best parks and open spaces across the city with Queens Walk Recreation Ground once again being honoured with the Green Flag status in 2012, and the Victoria Embankment which is used by people from across the city and wider. The Embankment has recently had the Flood Defence works carried out, the installation of three artificial cricket pitches, a new play area and outdoor health fitness equipment.

A Master Plan is also being put in place for additional recreational/resources to be introduced on Victoria Embankment, with a series of consultation meetings/events taking place to obtain the views and desires of local people.

The Meadows is going through some major developments at the moment including the Net Phase Two line with works taking place at various locations, the Decommissioning works by NCH and the Master Plan for the Victoria Embankment. The final Master Plan and a report detailing consultation findings and future steps will be produced and presented to the public in March 2013.

Design submissions from Nottingham City Council's Street Lighting PFI Contractor for the upgrading of the lighting at the Bridgeway Centre has now been received, and once the design compliance has been approved by Nottingham City Council, approval will be given to the contractor to programme the works. The proposal for the new lighting includes the requirement to place additional lights onto the building frontage and as such the relevant permission will be required. Due to this requirement, it is expected that the installation works will not commence until approximately April 2013.

This report will also highlight a range of projects/activities that have been delivered between December 2012 and February 2013.

The Bridge Ward priorities were reviewed at the Your Choice Your Voice event which was held on the 5<sup>th</sup> December 2012. Lead services consulted with citizens on the five core themes of Nottingham Plan 2020, and the priorities highlighted are those that have been agreed by citizens with partners for targeted action/s over the next several months. Dragons Den segment of the event was hugely successful with citizens voting in favour of 20 local projects that are aiming to contribute towards the neighbourhood transformation agenda.

# Ward priorities – Progress update

Priorities reviewed at the Your Choice Your Voice event in December 2012

Theme	Priority	Key Actions	Outcome	Lead
SAFER	<b>ASB</b> <ul style="list-style-type: none"> <li>Damage to vehicles around Wilford Crescent East and surrounding streets including Mundella, Glapton Rd, Woolmer Rd, Bathley St</li> </ul>	<ul style="list-style-type: none"> <li>Operation plan put in place by the Police</li> <li>Meetings and joint work with key services</li> <li>Gather intelligence on hotspots</li> </ul>	High Visibility Policing <ul style="list-style-type: none"> <li>Community youth engagement</li> <li>Offender management</li> <li>Target offenders and place on ASB where appropriate</li> <li>Crime prevention advice provided to residents</li> </ul>	Neighbourhood Policing Team
	<b>Fly Tipping</b> <ul style="list-style-type: none"> <li>Dumping of rubbish and large items including alleyways</li> <li>Bins on street (Beauvale Road, Lamcote Grove) and misuse of commercial bins in alleyways on terraces off Glapton Road</li> </ul>	<ul style="list-style-type: none"> <li>Discussions with Public Health on legal measures available for rubbish in alleyways</li> <li>Confirmation by Highways on adopted land next to bay windows of terraced properties</li> <li>Discussions with relevant landlords to address issues in relation to their property</li> <li>Continue with close work with TRA's in highlighting hotspots and raising awareness / educations amongst local residents</li> <li>Continue with Bulky Waste Collection awareness across the Ward</li> </ul>	3x fly tipping investigations currently active  3x statutory notices served on property owners in relation to rubbish in gardens  2x statutory notices complied with by owners in relation to rubbish in gardens	Neighbourhood Services Community Protection  Community Protection  Community Protection
NEIGHBOURHOODS				

- Work closely with Street Cleansing to identify person/s responsible for fly tipping and taking necessary action for investigation and enforcement
- Identify owners of waste in alleyways

FPN's for bins on Street/road  
Bins off street/road

Community Protection

3 FPN's delivered for fly tipping/litter including a FPN for resident on Wilford Crescent West for fly tipping to the front of alleyway which runs between Woolmer and Glapton Road

Community Protection

Bulky items logged and left out at correct date and time for collection

### Dog Fouling

- Hotspot areas include Woodward Street, Bathley Street, Embankment, Glapton Road, Queens Walk Rec
- Dogs not on leads / dangerous dogs
- Need for increased operations and enforcement

- A minimum of two Dog Fouling Operations carried out each month
- Leaflet drop and door knock (Woodward Street and affected areas)

1x dog fouling FPN

Community Protection

Reassurance to public and encourage residents to provide intelligence on dog fouling owners

Community Protection

Upcoming event – (Dog Fouling Road Show) pets at home,

Community Protection

# FAMILIES

## Young people

- Need for increased provision for 0-19 year olds in Meadows West (New Meadows around Clifton Minors Welfare, Bosworth, Tarbert Close etc)

- CPO's to receive training from Dog Control Officers on dangerous dogs

Castle Marina retail park

Hi visibility patrols and encourage responsible ownership of dogs

Community Protection

Children & Families Team

- Needs assessment to be carried out by the FCT
- Discussions to take place with Ground Works for engagement work & range of activities to be delivered
- Identify suitable venue/area for activities

Relevant activities delivered

Outreach & Detached work carried out

Spring and summer activities delivered on green area rear of Tarbert Close/ Middle furlong

## Children & Families Team

- Need to raise profile of Children & Families Team amongst citizens and across the area

- To hold 2 open days / drop-in sessions for the public and partners
- To attend and deliver short presentation at TRA's public meetings

Citizens/families better informed about FCT work

Increased uptake of services by citizens at Children Centre

# HEALTH

Public Health  
Nottingham City

## Physical activities

- Improving physical activities provision – Better choice of activities delivered at low cost and promoted accordingly

Ensure that local residents are fully informed of the activities available to them

January

Support groups to submit for Decade of Better Health funding

January

<http://www.decadeofbetterhealth.com/small-grants-fund/>

## Health Checks

- Promote national health check programme and have free health checks at localised events

To raise awareness of the free health services available to people via red book promotion and promote the healthy change service

To offer free healthy walks training

Free Training  
available



H:\DoBH\Theme  
work\Physical Activity

To promote the National health Check programme

<http://www.healthcheck.nhs.uk/>

ensure that posters are displayed in key venues

Monitor numbers of health checks

Run health checks at events

For both Change Maker volunteers will be recruited and established and help raise awareness in the areas.



## WORKING

### Training

- More training opportunities for young people and those over the age of 40

1/ Currently in partnership discussions around the new funding allocations for the area based grant Aid funding to the voluntary and community Sector.  
2/ We currently promote all local vacancies including city Hub vacancies and Nottingham jobs fund opportunities.  
3/ We promote all local training and volunteering opportunities through the One Stop Shop

### Contracts we currently deliver locally

- IAG – information and Advice for unemployed over the age of 19
- Work Club – every Thursday 2pm – 5pm at the One Stop Shop
- Supporting Families with multiple barriers

Ignite- supporting young people 14 – 19 who are NEET.

### Jobs

- More job opportunities locally for young people and those over the age of 40

### October to December 2012

We Have Supported

IAG - 170 new Individuals

Work Clubs – 72 new individuals

Supporting Families – 6 new families supported

Ignite 10 new 14 – 19 year olds supported

### Outcomes / Progressions from Above projects

**35 people have** progressed into Work.  
**38** into Training  
**4** into voluntary work  
**63** referred into specialist support

Employment Team –  
One Stop Shop

# Community Engagement

## Events Delivered

Event	Lead Partners	Date/Time	Venue
Bridgeway Centre Christmas Event	MPT	8 <sup>th</sup> December 2012 – 1pm -3.00pm	Bridgeway Centre
Lights Event	Arkwright Meadows Community Gardens	8 <sup>th</sup> December 2012 – 4pm – 7.00pm	Arkwright Meadows Community Gardens
Your Choice Your Voice Event	Nottingham City Council	5 <sup>th</sup> December 2012 – 6pm – 8.30pm	Queens Walk Community Centre
NMTRA Christmas Party	NMTRA	13 <sup>th</sup> December 2012 – 4.00pm – 6.00pm	Queens Walk Recreation Park Pavilion
Under Fives Fun Day	Children & Families Team – Meadows Library	6 <sup>th</sup> February 2013 – 10.00am – 3.00pm	Meadows Library
Draft Budget Consultation Event	Nottingham City Council	6 <sup>th</sup> February 2013 – 6.00pm – 7.30pm	Meadows Library

## Future Events and Activities Planned

Event	Lead Partners	Date/Time	Venue
Nature Themed Crafts & Stories	Meadows Library – Nottingham Contemporary	18 <sup>th</sup> February 2013 – 2.00pm - 3.00pm	Meadows Library
Snowboarding	Meadows Youth Club / Family & Community Team & Monty Hind	18 <sup>th</sup> February 2013 – 8.45am – 5.00pm – For 10 – 25yrs old	Swadlincote – Derbyshire
February Half Term	Meadows Youth Club / Family & Community Team & Groundworks	20 <sup>th</sup> / 21 <sup>st</sup> February 2013 – 10.00am – 4.00pm 11 – 19yrs old	Meadows Youth Club
Angels With Attitude	Meadows Youth Club / Family & Community Team	2 <sup>nd</sup> March 2013 – 10.00am – 3.00pm - 11- 25 yrs old	Monty Hind Youth Centre
County Pool Event	Meadows Youth Club / Family & Community Team	19 <sup>th</sup> March 2013 – 6.45pm – 9.30pm - 11- 25 yrs old	Monty Hind Youth Club
Sign Language Course	Meadows Youth Club/ Family & Community Team	7 <sup>th</sup> , 14 <sup>th</sup> , 21 <sup>st</sup> & 28 <sup>th</sup> March 2013 – 7.00pm – 8.30pm - 11 – 25 yrs old	Monty Hind Youth Club

# Community Engagement

## Ward Walks

Area/Estate	Date/Time	Meeting Point
Old Meadows – Bathley, Beauvale, Woolmer	13 <sup>th</sup> December 2012 – 11.00am	Corner of Glapton Rd & Bathley Street
Meadows – Collygate, Turney, Pyatt, Woodward	27 <sup>th</sup> January 2013 – 11.00am	Corner of Bathley & Collygate Road
Meadows – Radcliffe, Lamcote, Bunbury	7 <sup>th</sup> March 2012 – 11.00am	Portland Leisure Centre

## Community Meetings

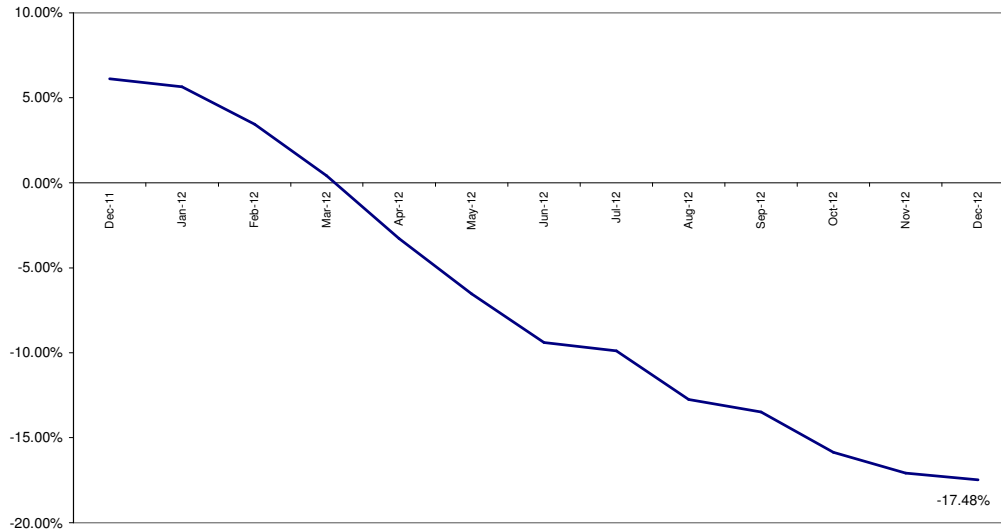
Group	Date	Venue
Riverside School Consultation Drop In	4 <sup>th</sup> December 2012 – 9.30am – 10.30am	Meadows Library
Community Meeting	6 <sup>th</sup> December 2012 – 6.30pm	Queens Walk Community Centre
Britain in Bloom	19 <sup>th</sup> December 2012 – 12-1.00pm	AMC Gardens
New Meadows Tenants & Residents Association	10 <sup>th</sup> January 2013 – 6.30pm – 8.00pm	Lothmore Court
Queens Walk Community Association	28 <sup>th</sup> January 2013 – 7.30pm – 9.00pm 25 <sup>th</sup> February 2013 – 7.30pm – 9.00pm	Queens Walk Community Centre Queens Walk Community Centre
New Meadows & Tenants Residents Association – AGM	7 <sup>th</sup> February 2013 – 6.30pm – 8.00pm	Lothmore Court
Joint TRA's Meeting	12 <sup>th</sup> February 2013 – 10.00am – 12.00	Meadows Children Centre
Old Meadows Tenants & Residents Association Public Meeting	19 <sup>th</sup> February 2013 – 7.00pm – 9.00pm	Meadows Library
Meadows Partnership Trust	7 <sup>th</sup> March 2013 – 6.00pm – 8.00pm	Queens Walk Community Centre

# Finance

- **Ward Councillor Budgets** (as at 18/01/2013)  
Total amount allocated this period £4,500 (Dec 12 – Feb 13)  
Budget remaining unallocated (inc. of 2012-2013 allocation): £06,010
- **Area Capital Fund**  
Total amount allocated this period £56,895 (schemes approved at September / November Area Committee)
- Willersley Drive – Junction Improvement, £10,639 (scheme to February Area Committee for approval)  
  
Budget remaining unallocated - £000, 00.00 (inc. of 2012-2013 allocation and under spend)
- **Others – Section 106, NCH Environmentals, Other Funding**

# Crime

All Crime in Bridge -  
% Change over 2010/11 Baseline (Rolling 12 Month)



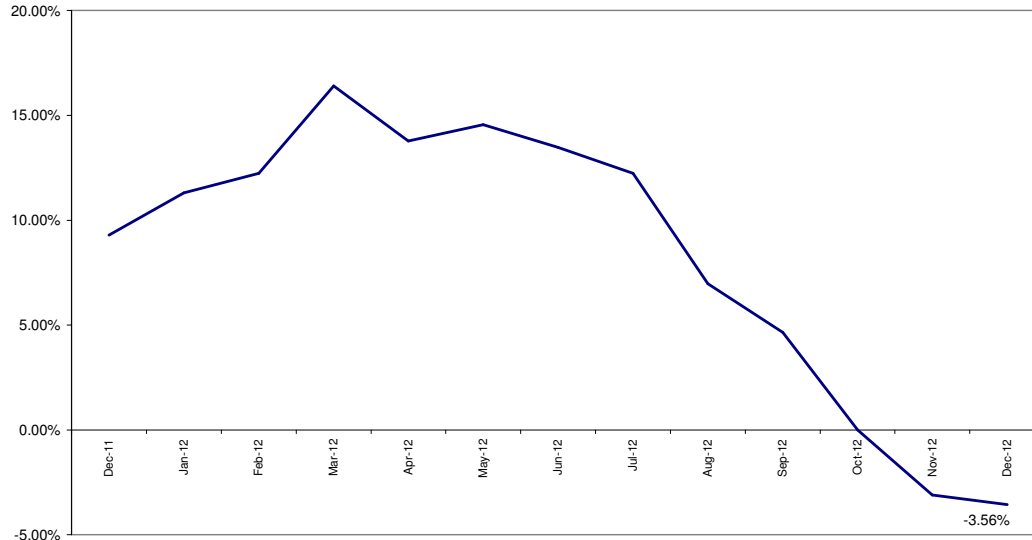
Red		
Amber		
Green*	5 fewer crimes	-6.25%

\*Refers to December 2012 compared to December 2011

- In December 2012 (compared to December 2011) All Crime in Bridge was down 6.25% (5 crimes, see above RAG rating).
- The above baseline graph compares All Crime over the previous 12 months to a 2010/11 baseline. The wards steady improvement against this measure is highlighted.
- Year to date (compared to the corresponding period last year) All Crime in Bridge is down 21.92%.

# All ASB

All ASB in Bridge -  
% Change over 2010/11 Baseline (Rolling 12 Month)



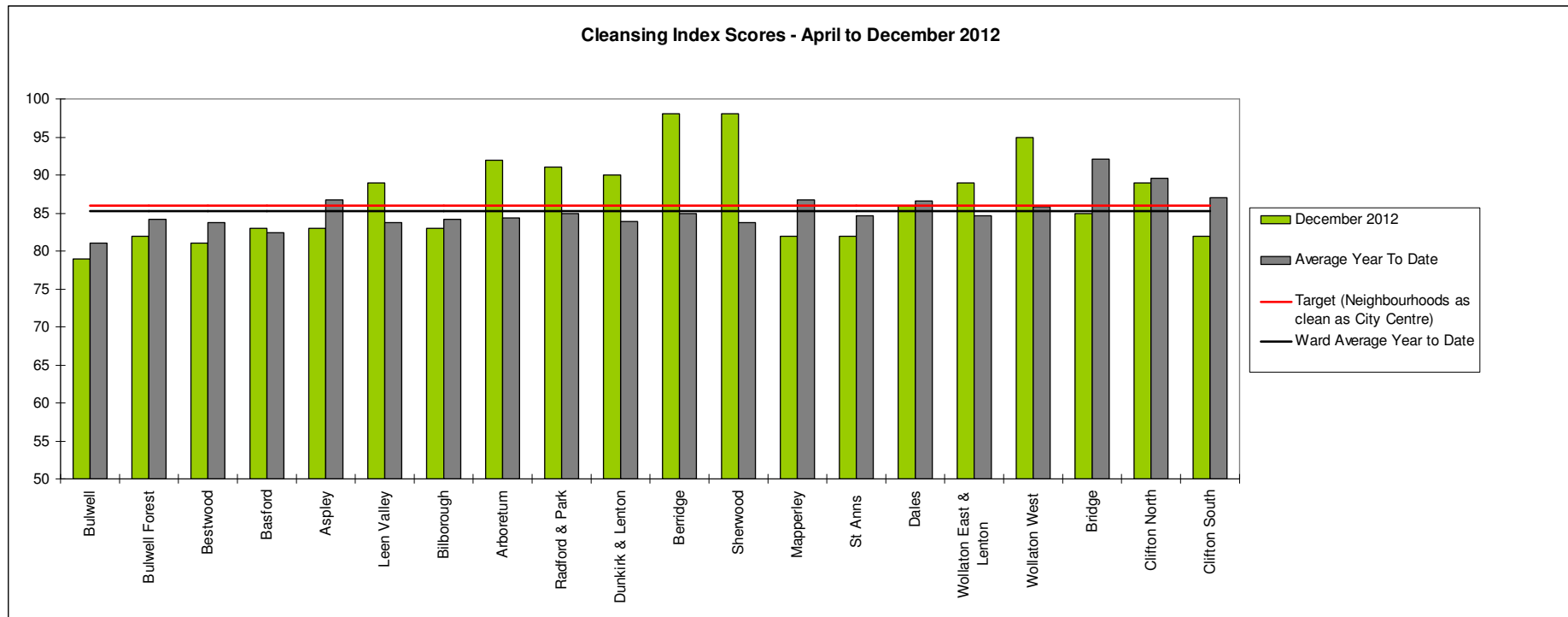
Red	
Amber	
Green*	3 fewer calls -3.56%

\*Refers to December 2012 compared to December 2011

- In December 2012 (compared to December 2011) All ASB in Bridge was down 3.56% (3 calls, see above right RAG rating).
- The above graph compares All ASB over the previous 12 months to a 2010/11 baseline. Broadly speaking there has been a lot of improvement since March 2012, however looking at last month, improvements appear to be slowing.
- Year to date (compared to the corresponding period last year) All ASB was down 22.4%.

# Cleanliness Index

This graph shows the position of your ward compared to other Wards



**The “neighbourhood as clean as the city centre” benchmark target on cleanliness is to achieve a score of 86% in every ward. The 86% target is shown in red in the above graph.**

To calculate the Cleanliness Index (CI) an agreed number of transects are surveyed across an area covering a range of land types. Each site surveyed is awarded a cleanliness grade based on a 7 point scale from A to D where Grade A: – no litter, and Grade D: - heavily littered. The maximum possible score of 100 is achieved when all sites achieve Grade A.

The Code of Practice for Litter and Refuse (COPLAR) requires councils to strive to reach an ‘acceptable’ standard of cleanliness (grade B or better) across the Council area. Grade A is the ultimate goal and is how a site should be immediately after sweeping but is almost impossible to maintain for any length of time. For example, a grade A site is completely free of litter – one cigarette butt takes it down to B+.

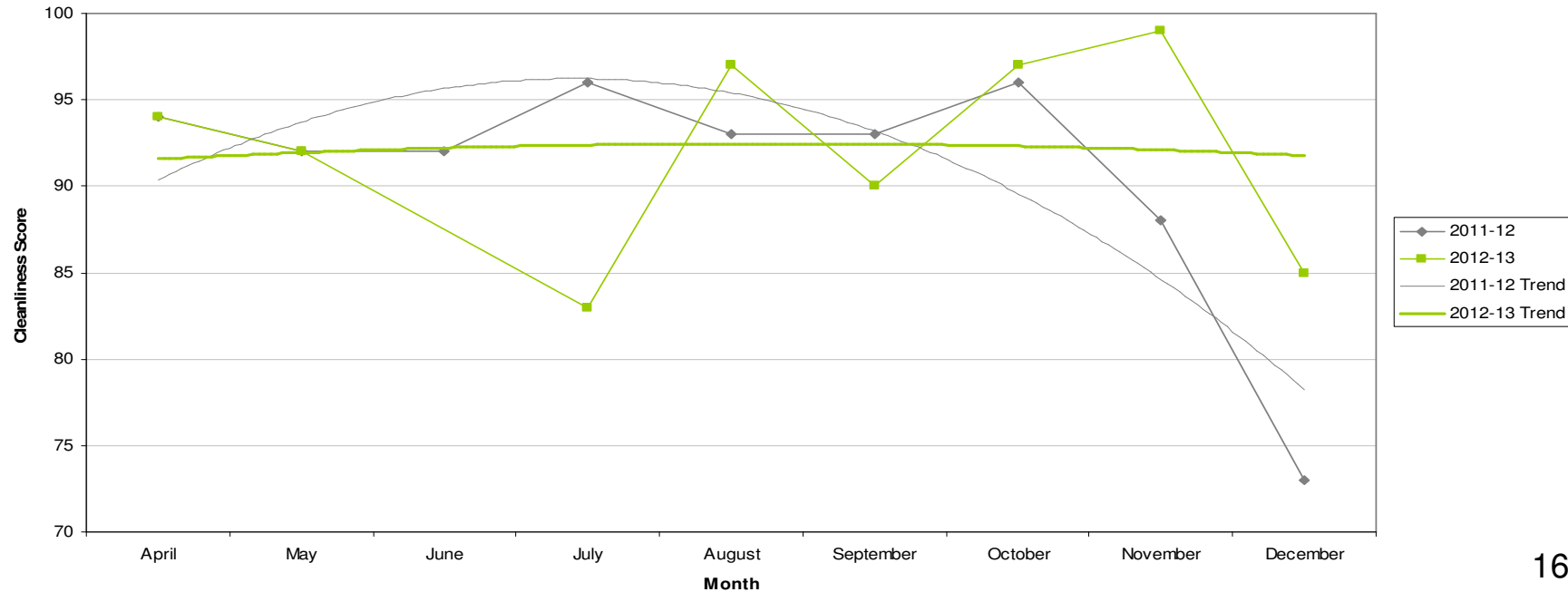
To achieve the manifesto commitment of Neighbourhoods as clean as the City Centre a target of 86 is required as that was the CI for the City Centre in May 2011. To give some context if all areas surveyed achieved a grade ‘B’ standard, this would equate to a cleanliness index of 67.

# Cleanliness Index

Cleanliness Index Score	<b>85</b>
Performance compared to previous year	↗
Performance compared to neighbourhoods target of 86	↘

- All data refers to a comparison with the previous year's month
- It is proposed that performance over time graphs be used for each indicator
- Historic data for comparison is not available for dog fouling

Cleanliness Index



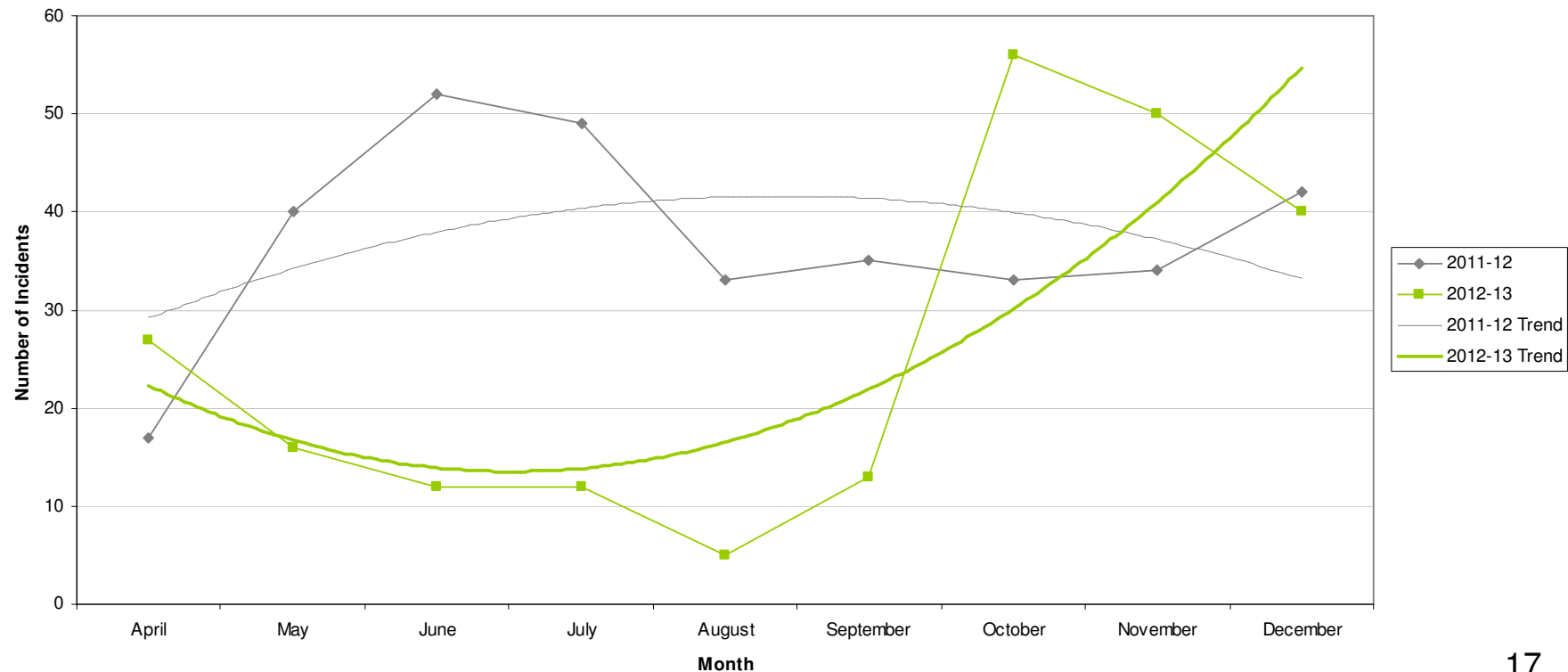


# Graffiti Reports

<b>RED</b>		
<b>AMBER</b>	<b>40 incidents</b>	<b>Decrease of 2</b>
<b>GREEN</b>		

- All data refers to a comparison with the previous year's month
- It is proposed that performance over time graphs be used for each indicator
- Historic data for comparison is not available for dog fouling

Incidents of Graffiti

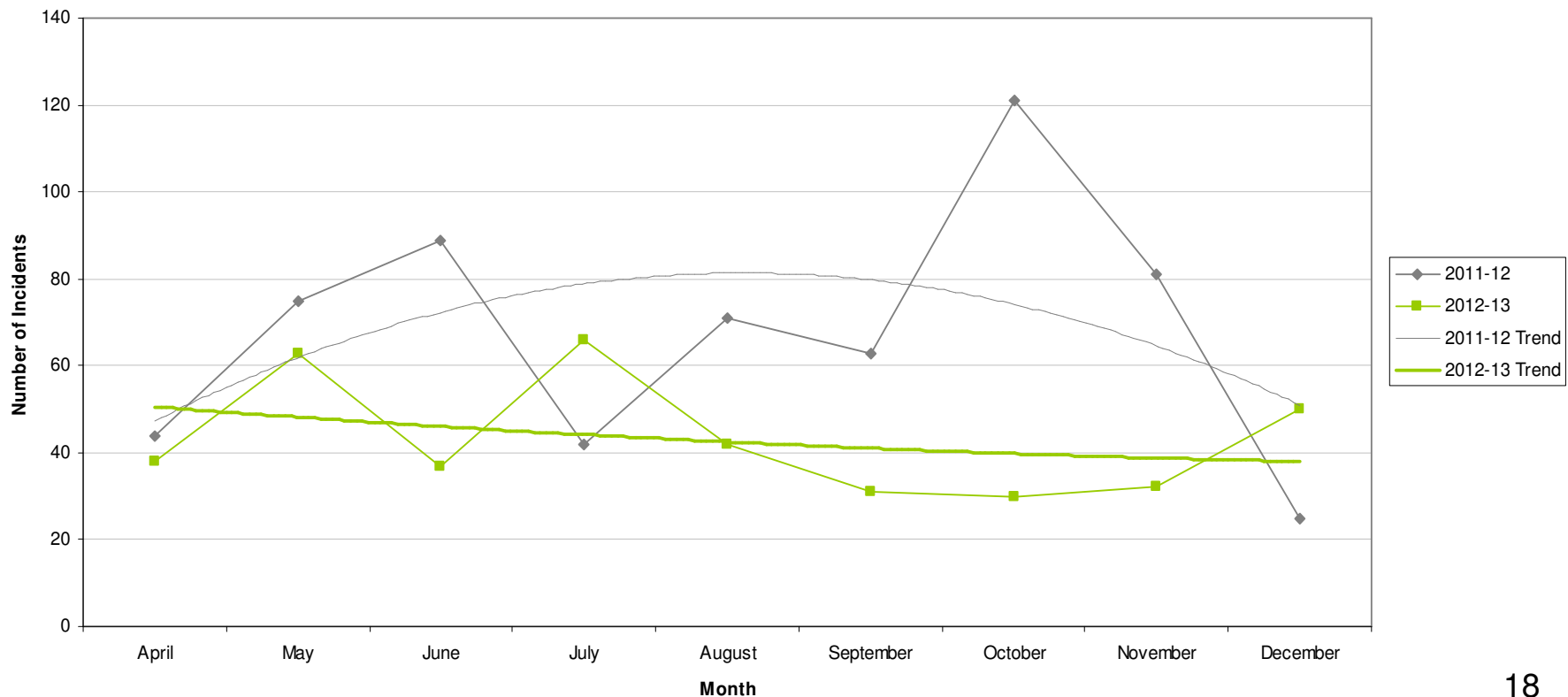


# Fly Tipping

<b>RED</b>	<b>50 incidents</b>	<b>Increase of 25</b>
<b>AMBER</b>		
<b>GREEN</b>		

- All data refers to a comparison with the previous year's month
- It is proposed that performance over time graphs be used for each indicator
- Historic data for comparison is not available for dog fouling

Incidents of Fly Tipping



# Unemployment Rate

Area	Nov-12			Change in last		Change in last year	
	Number	Rate	City Rank	Number	%	Number	%
Berridge	1,030	7.1	7	-11	-1.1	67	7
Dunkirk and Lenton	253	2.3	19	-7	-2.7	-20	-7.3
Radford and Park	754	4	17	-14	-1.8	-13	-1.7
Sherwood	544	5.1	13	2	0.4	-66	-10.8
Wollaton East and Lenton Abbey	143	1.4	20	4	2.9	5	3.6
Wollaton West	248	2.7	18	-6	-2.4	10	4.2
Aspley	1,174	10.4	1	34	3	-13	-1.1
Basford	728	6.5	10	21	3	36	5.2
Bestwood	1,009	8.9	3	22	2.2	19	1.9
Bilborough	750	7.2	6	5	0.7	-25	-3.2
Bulwell	1,061	9.7	2	44	4.3	34	3.3
Bulwell Forest	410	4.5	15	-19	-4.4	-45	-9.9
Leen Valley	335	4.8	14	-18	-5.1	-11	-3.2
Bridge	696	6.6	9	-11	-1.6	-24	-3.3
Clifton North	378	4.3	16	-9	-2.3	-23	-5.7
Clifton South	524	6	12	17	3.4	11	2.1
Dales	863	7.4	5	-1	-0.1	22	2.6
Mapperley	703	6.3	11	1	0.1	-3	-0.4
St Ann's	1,195	8.7	4	-39	-3.2	8	0.7

*This is an edited version of a report produced by: Geoff Oxendale, Information and Research Officer, Nottingham City Council*

# Housing

## Bridge Ward - Housing



### Anti-social behaviour - Clifton (Bridge Ward)

Indicator	Current Target	2010/11	2011/12	2012/13		
		Value	Value	Value	Status	Trend
% of ASB cases resolved - Clifton	97.6%	97.68%	96.98%	99.25%		
% of ASB cases resolved by first intervention - Clifton	75%	-	-	78.95%		n/a

### Empty properties - Bridge Ward



Indicator	Current Target	2010/11	2011/12	2012/13		
		Value	Value	Value	Status	Trend
Average void re-let time for Bridge Ward	26	43.72	117.33	29.28		
Lettable voids Bridge Ward	-	32	23	20		
Empty properties awaiting decommission in Bridge Ward	-	3	30	68		

### Estate star ratings (from Tenant Service Inspectors)







Indicator	2010/11		2011/12		2012/13		
	Value	Status	Value	Status	Value	Status	Trend
Estate star rating - Meadows	3 Star		3 Star		3 Star		

# Housing

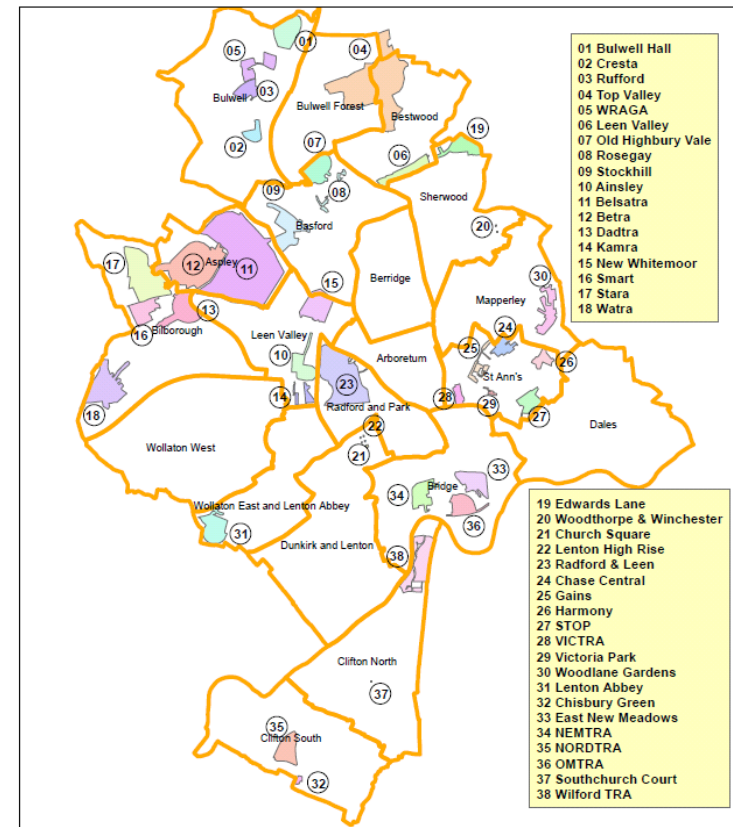
## Rent Collection - Clifton

Indicator	Current Target	2010/11	2011/12	2012/13		
		Value	Value	Value	Status	Trend
Rent charged that has been collected - Clifton	100.2%	100.7%	100.5%	100%		

### Key:

-  Performance on or exceeding target
-  Performance below target
-  Data only performance indicator
-  Performance has improved compared to two years ago
-  Performance has deteriorated compared to two years ago
-  Performance unchanged

**Map of Tenants and Residents Associations by Ward**



Data prepared by Nottingham City Homes Performance Team

For more information please contact Tricia Quinn, Performance Review Manager on 0115 9157365 or Marcus Parton, Performance Review Officer 0115 915715

# Community Protection

In December 2012 there were five court outcomes in Bridge ward. These comprised three 'statutory notices', a 'suspended possession order' and an 'ASBO on conviction'.

*Data has been received from Community Protection and where postcodes have been listed these have been geo-coded and mapped to determine the Ward. All addresses relate to the address of the Perpetrator.*

*FPNs are not currently available at ward level.*

# Fire

Table: Fire Rate (per 1000 of population) by ward (previous 12 months)

Ward	All Fire		Property		Secondary		Rank
	Volume	Rate	Volume	Rate	Volume	Rate	
Arboretum	14	1.21	5	0.43	9	0.77	13
Aspley	68	3.90	13	0.75	55	3.16	2
Basford	62	3.84	12	0.74	50	3.10	3
Berridge	44	2.23	19	0.96	25	1.27	10
Bestwood	44	2.58	13	0.76	31	1.82	7
Bilborough	46	2.75	13	0.78	33	1.97	6
Bridge	37	3.63	6	0.59	31	3.04	4
Bulwell	91	5.51	25	1.51	66	4.00	1
Bulwell Forest	43	3.13	12	0.87	31	2.26	5
Clifton North	15	1.15	4	0.31	11	0.84	16
Clifton South	19	1.36	6	0.43	13	0.93	12
Dales	19	1.18	10	0.62	9	0.56	15
Dunkirk and Lenton	11	0.91	5	0.41	6	0.50	18
Leen Valley	25	2.30	3	0.28	22	2.02	9
Mapperley	16	1.06	8	0.53	8	0.53	17
Radford and Park	30	1.48	11	0.54	19	0.94	11
Sherwood	18	1.19	3	0.20	15	1.00	14
St. Ann's	31	2.40	9	0.70	22	1.70	8
Wollaton East and Lenton Abbey	8	0.69	1	0.09	7	0.61	19
Wollaton West	5	0.34	0	0.00	5	0.34	20
<b>Average Rate (of 20 Wards)</b>	<b>2.14</b>		<b>0.57</b>		<b>1.57</b>		

Key:  
 Highest  
 Second Highest  
 Third Highest

Bridge ranks 4<sup>th</sup> highest out of the 20 wards for rate (per 1000 of population) of all intentional fire.

NB: Wards are ranked from 1 – 20 where 1 is the highest Rate and 20 is the lowest Rate.

# Methodology

Data has not been audited or verified and therefore must only be used as a reflection of crime.

Where Crime and ASB is broken down to Ward level this data has been mapped, and using a polygon created for the *Council boundary* of the 'City Centre' this data has been removed where it has impacted on the Wards that crossed into it. Where figures for Rate of the population have been referred to, this has been taken into account for these calculations.

Where possible the most recent data is used, although for some areas this may be a month further in arrears.

Discussions continue with other agencies regarding what further data can be included.